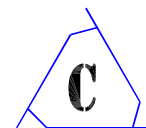
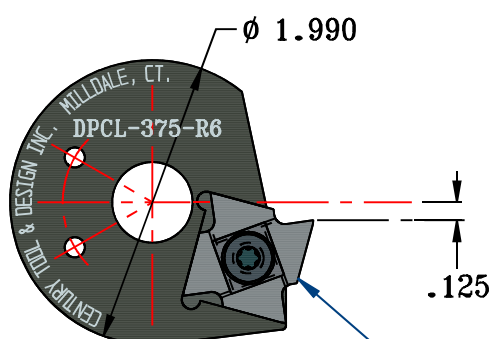
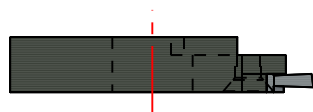


# DAVENPORT CUT-OFF TOOLHOLDERS



PATENT No. D307859

## DAVENPORT REGULAR C/O TOOLHOLDER

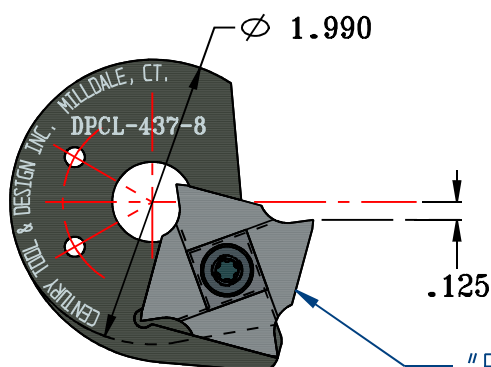
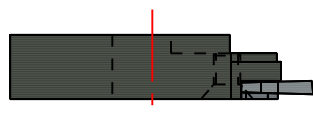


THE INSERT SHOWN IS RIGHT HAND  
EXAMPLE - SLPR-078

TOOLHOLDER No.	SCREW No.	WRENCH No.
DPCL-375-R6	CTD-3341	CTD-3619

"S"-STYLE INSERT (.750 I.C.)  
SEE PAGES #8 AND #9

## DAVENPORT OVERSIZE C/O TOOLHOLDER



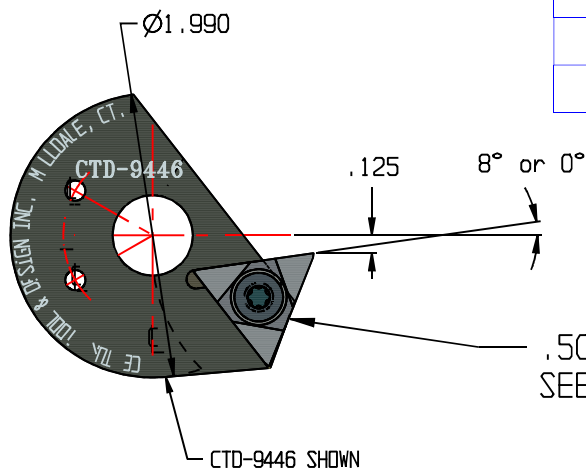
THE INSERT SHOWN IS RIGHT HAND  
EXAMPLE - ELPR-094

TOOLHOLDER No.	SCREW No.	WRENCH No.
DPCL-437-8	CTD-4857	CTD-3619

"E"-STYLE INSERT (1.000 I.C.)  
SEE PAGES #8 AND #9

# TRIANGULAR INSERTED DAVENPORT CUT-OFF TOOLHOLDERS

## DAVENPORT REGULAR C/O TOOLHOLDER

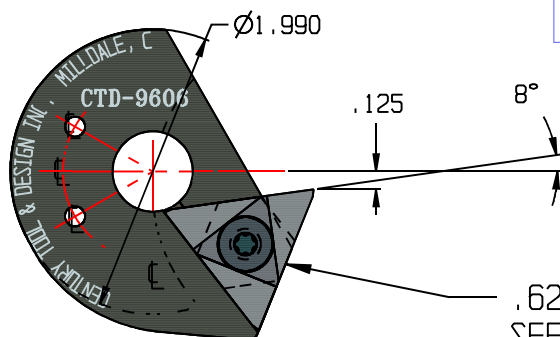
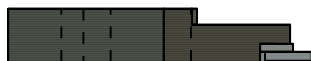


TOOLHOLDER No.	SCREW No.	WRENCH No.
CTD-9446	CTD-4857	CTD-3619
CTD-9446-0	CTD-4857	CTD-3619

ALTERNATE HEX SCREW AND WRENCH  
ORDER AS CTD-9492 FOR SCREW AND  
1/8 HEX FOR WRENCH

.500 I.C. TRIANGULAR INSERT  
SEE PAGE #19 FOR INSERT INFORMATION

## DAVENPORT OVERSIZE C/O TOOLHOLDER



TOOLHOLDER No.	SCREW No.	WRENCH No.
CTD-9606	CTD-4857	CTD-3619

ALTERNATE HEX SCREW AND WRENCH  
ORDER AS CTD-9492 FOR SCREW AND  
1/8 HEX FOR WRENCH

.625 I.C. TRIANGULAR INSERT  
SEE PAGE #19 FOR INSERT INFORMATION

# C WEDGE - LOC™ C

## B & S AND DAVENPORT TOOLHOLDERS

### SPECIAL ORDER #00 B & S TOOLHOLDERS

PATENT No. 7862261

**INSERT STYLE #2**  
LOCATED ON PAGE #27

**WE ALSO SUPPLY HOLDERS AND INSERTS FOR #0 AND #2 BROWN & SHARPS**

TOOLHOLDERS	"A"	WEDGE No.
CTD-8770-375	.375	CTD-8766-375
CTD-8770-500	.500	CTD-8766-500
CTD-8770-625	.625	CTD-8766-625
CTD-8770-750	.750	CTD-8766-750

### DAVENPORT TOOLHOLDERS

PATENT No. 7862261

**INSERT STYLE #3**  
LOCATED ON PAGE #27

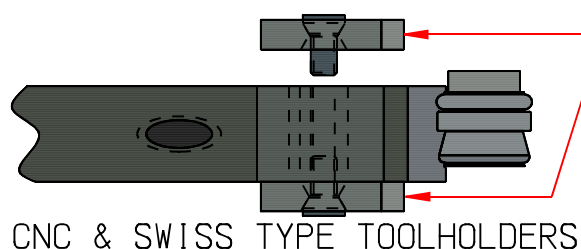
STANDARD HOLDER	"A"	WEDGE No.
CTD-8780-500	.500	CTD-8767-500

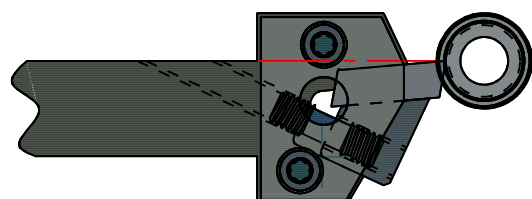
SPECIAL ORDER HOLDERS	"A"	WEDGE No.
CTD-8780-375	.375	CTD-8767-375
CTD-8780-625	.625	CTD-8767-625
CTD-8780-750	.750	CTD-8767-750

FOR VARIATIONS OF THESE TOOLHOLDERS  
PLEASE SUBMIT YOUR REQUEST FOR A QUOTE

# **WEDGE-<sup>TM</sup>Loc INSERTS & TOOLHOLDERS**



CNC & SWISS TYPE TOOLHOLDERS



SEE PAGES 28,29 AND 30

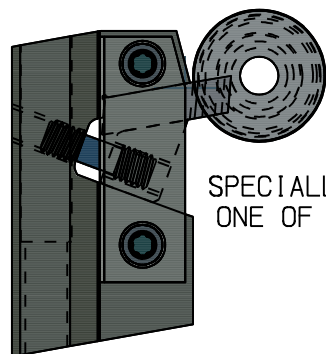
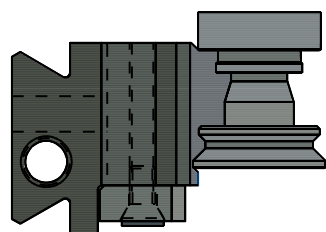
OUR DESIGN STAFF WILL WORK CLOSELY WITH YOU TO PRODUCE INSERTS FOR YOUR PARTS.

WE WILL WORK TO MINIMIZE THE NUMBER OF OPERATIONS, HELPING WITH PRODUCTION.

ALL INSERTS HAVE A SPECIAL TOP FINISH FOR IMPROVED PART FINISH.

INSERTS ARE OFFERED IN DIFFERENT GRADES OF CARBIDE OR HIGH SPEED STEEL. INSERT COATINGS AND GRADE IS DEPENDENT ON YOUR PART MATERIAL AND TURNING SPEED.

## DOVETAIL TOOLHOLDER



SPECIALLY DESIGNED FOR ONE OF OUR CUSTOMERS.

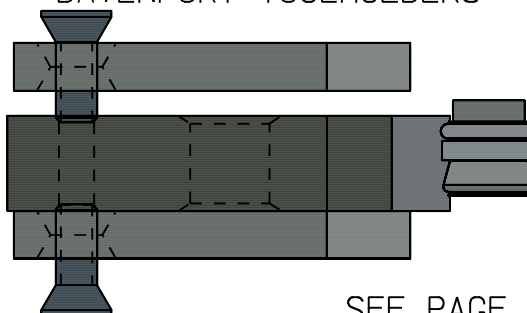
SIDE PLATE CAN BE USED ON BOTH SIDES FOR MOST TOOLHOLDERS.

OUR PATENTED TECHNOLOGY CAN BE APPLIED TO ANY TOOLHOLDER.

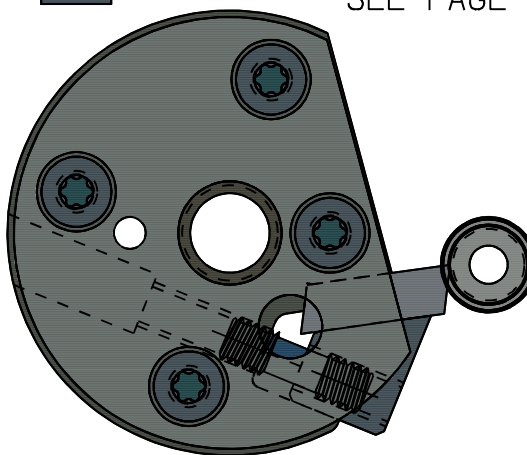
ONCE THE TOOLHOLDER IS SET UP, MAKING DIFFERENT PARTS IS AS EASY AS CHANGING THE INSERT.

INSERT IS LOCKED IN BY THE WEDGE, WHICH CAN BE ACCESSED FROM FRONT OR BACK. THIS AIDS IN CHANGING INSERT.

## BROWN & SHARP AND DAVENPORT TOOLHOLDERS



SEE PAGE 31.



FOR A FRACTION OF THE COST OF NEW, OUR REGRIND SERVICE REMOVES ANY WEAR AND REAPPLIES SPECIAL FINISH. THE INSERT IS THEN RECOATED.

DUE TO OUR PATENTED DESIGN, INSERTS NEW OR REGROUND WILL LOCATE BACK TO CENTER HEIGHT AND LENGTH.

**PATENT No. 7862261**